

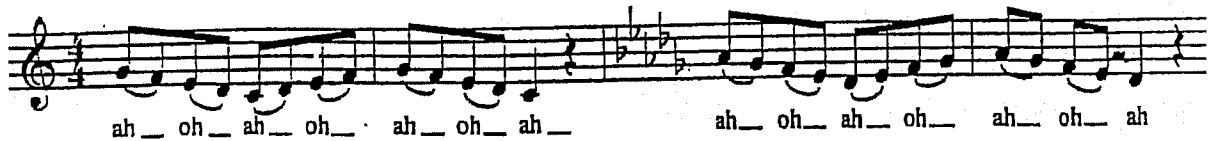
RANGE/TECHNIQUE

Highs and Lows



mmMah - hah - hah - hah - hah - hah - hah - hah - hah - hah - hah - hah - hah - hah
mmMeh - heh - heh - heh - heh - heh - heh - heh - heh - heh - heh - heh - heh - heh

Through the Break



ah_ oh_ ah_ oh_ ah_ oh_ ah_ ah_ oh_ ah_ oh_ ah_ oh_ ah_ oh_ ah_

Energized Soft



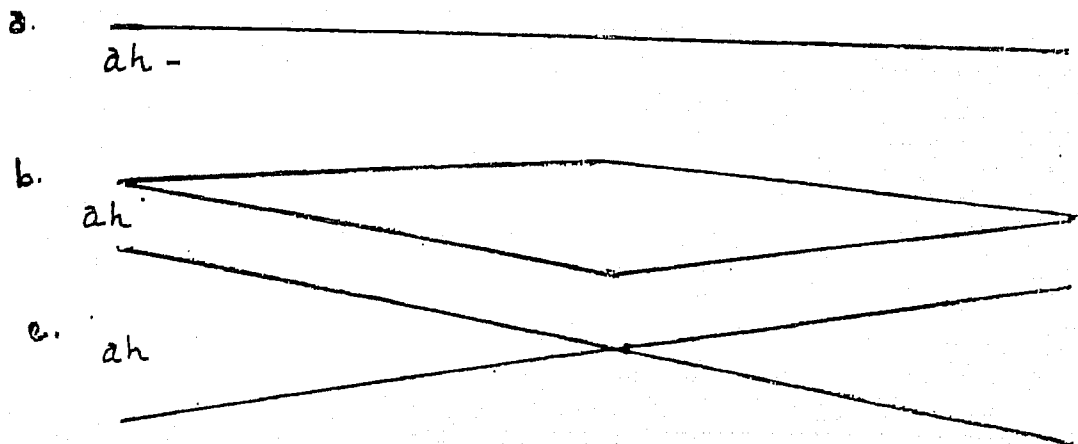
ah ah ah ah ah

Patterns



hee hay hah hoh hee hay hah hoh hee hay hah hoh hoo

Messa di Voce



PYTHAGOREAN TUNING SYSTEM

SCALE STEPS

COMMON BARBERSHOP KEY SIGNATURES	SCALE STEPS		1	2	3	4	5	6	7	8
	DO	*CENTS	DI	RE'	MI	FA	SE'	LA	TI	DO
C	C	0	C#	D	E	F	G	A	B	C
G (#)	G	+14	D#	A	B	C	D	E	F#	G
D (##)	D	+18	E#	B	C#	D	A	B	C#	D
A (###)	A	+20	F#	C	D#	E	B	C	F#	A
F (b)	F	+16	G#	D	E	F	C	D	G#	F
B ^b (bb)	B ^b	+12	A ^b	E	F	G	B	C	A ^b	B ^b
E ^b (bbb)	E ^b	+8	B ^b	F	G	A	C	D	B ^b	E ^b
A ^b (bbbb)	A ^b	-2	C ^b	G	A	B	E	F	C ^b	A ^b

Comparison of Pythagorean Tuning System to Equal Tempered Scale

- * Cents: A musical interval
- Octave: 1200 cents in an octave. Each semitone has 100 cents.
- + or - (Relationship To Equal Temperament (Fixed Scale))

THE CHALLENGE OF THE BARITONE PART

Function of the Baritone:

- Fill in the gaps
- Blend the other three voices together
- Sing similarly to the tenor, lead or bass depending on the note location/range
- Make the other three sound terrific

Baritones need to avoid:

- Following—produces synchronization issues
- Singing just notes—tuning errors
- Singing a single vocal sound (texture)—blend dysfunction
- Singing a single dynamic level—coning issues

Baritones need to be smart about the music:

- Find the octaves
- Find the scissors
- Find notes with accidentals
- Find the location in the chord (above lead, below lead)
- Find the part of the chord
- Find the dissonant notes
- Identify the resonance – spike, mellow, width, etc.
- Find the glue—is it vocal timbre, vocal presence, singing into the lead/bass/tenor, floating?
- Always listen and learn to sing music and not “notes”
- YES, make notes on your music

Baritones can rule if:

- They spend time on their music and sing accurately
- They spend time dueting their part
- They spend time trioling their part
- They spend time listening to the other three duet/trio
- They are determined to be an equal fourth—not a tacked on appendage
- They understand the function of their part
- They avoid following—need to be timely in delivery of part
- They sing to make the sound work not worrying about coning

The BARITONE part is for the person who is able to be a mix of right and left brain. The singer must be able to get the technique in hand and then sing like it does not exist. The baritone singer must be a multi-tasked musician.