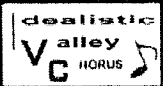
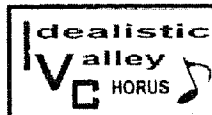


"Singing is a family thing..."



888-8888
choruswebsite.com

"Now I have time to sing!"



888-8888
choruswebsite.com

"Singing! The one thing I do for ME."



888-8888
choruswebsite.com

"Singing! The one thing I do for ME."



888-8888
choruswebsite.com

Choir not quite enough?



Perform with the a cappella



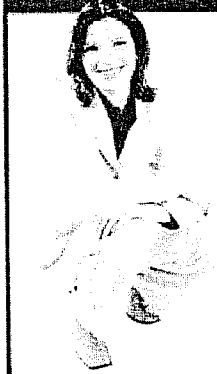
An auditioned ensemble of musical women who know their stuff!

Tues., 7-10 p.m.
Address of Rehearsal Hall

888-8888

choruswebsite.com

"Singing! The one thing I do for ME."



888-8888
choruswebsite.com

"The best vocal work-out in WNY!"



888-8888
choruswebsite.com

"Sing & Dance Like Never Before!"



888-8888
choruswebsite.com

Prospective – New Member Guide Recommended Information Distribution

Prospective Member Guide – Recommended Information CONTENTS

CONTACT INFORMATION	Page
LEARNING BARBERSHOP MUSIC	Page
PROSPECTIVE MEMBER TO NEW MEMBER AT-A-GLANCE:	
THE AUDITION PROCESS	Page
ATTENDANCE	Page
VOCAL REQUIREMENTS AND QUALIFICATION	Page
THE VISUAL PICTURE	Page
BGC PERFORMANCES	Page
FINANCIAL INVESTMENT	Page
THE ROLE OF THE PROSPECTIVE MEMBER	Page
ROOKIE MEMBER PARTICIPATION LEVELS	Page

Transitional Member Guide – Recommended Information

CONGRATULATIONS ON PASSING YOUR AUDITION TO BECOME A MEMBER OF THE IDEALISTIC VALLEY CHORUS!

Your successful audition is the first – and most nerve-wracking – part of the process towards becoming a member of the Idealistic Valley Chorus. Keep in mind; you will continue to be introduced to the chorus as a “guest” until the process is complete!

There are just a few steps remaining before becoming a New Member of IVC:

1. You will be asked to fill out a Membership Application
2. The application and profile form you completed will go to the Team Leader, who will recommend you for membership to the Management Team. A Management Team vote will be taken.
3. The Management Team’s recommendation is taken to the chorus body the following week for chorus vote. The chorus membership vote is not vocally-based (that is, you do not have to vocally audition in front of the chorus!), but a motion to accept you into the chorus can not be made until you have passed your vocal audition for the Music Committee.
4. You will receive a letter with the results of the chorus vote for your membership acceptance.
5. After the Management Team and the chorus body has voted to accept your membership into IVC, the Membership Chair will ask you to submit a check made payable to “The Idealistic Valley Chorus” for your start-up costs. The start-up costs are as follows:

For Members 26 years and older:

\$000 = \$000

This includes: International dues:	\$80
First month chapter dues:	\$00?
Other items?	\$00?

For Members 25 years and under:

\$00 = \$00

This includes: International dues:	\$40
First month chapter dues:	\$00?
Other items?	\$00?

6. The week following an affirmative vote from the chorus body, you will be introduced to the chorus as a NEW member. You will receive your NEW MEMBER GUIDE, your own spot on the risers, music and learning CDs for the current IVC repertoire, and a mentor who will work closely with you for the remainder of your Rookie Year.
7. When your membership card and name tag arrive from Sweet Adelines International, you will be presented with them during a rehearsal.

New Member Guide – Recommended Information

CONTENTS

MEMBERSHIP INFORMATION	Page
CONTACT INFORMATION	Page
NEW MEMBERS' RESPONSIBILITIES	Page
ROOKIE MEMBER PARTICIPATION LEVELS	Page
LEARNING THE MUSIC	Page
TAPE QUALIFICATIONCURRENT REPERTOIRE/	
HOLIDAY REPERTOIRE	Page
VISUAL REQUIREMENTS	Page
COACHING SESSIONS	Page
PERFORMANCES	Page
RETREAT WEEKEND	Page
REGIONAL CONTEST	Page
FINANCIAL INFORMATION	Page
BGC INTERNAL STRUCTURE	Page
QUARTETING	Page
SOCIAL EVENTS	Page
REGION 16-SPONSORED EVENTS	Page
SWEET ADELINE INTERNATIONAL-SPONSORED EVENTS	Page

Organized Valley Rookie Member Participation Levels

These levels of participation are optional for Rookie Members only.

It is expected that a Rookie Member would complete the cycle within her first full year of membership.

EXPECTATIONS by the end of the suggested time frame ↑	SONGS (Taped and Passed)	VOCAL PRODUCTION/ VISUAL	CONTEST/ PERFORMANCES <i>that fall within each four-month period</i>	SUGGESTED TIME FRAME *
LEVEL 1	Learn 2 audition songs, plus 3 additional songs, as determined by the Music Team & Director(s) (total of 5 songs from existing rep) Learn new rep songs as they are introduced	Watch "Fundamentals of Vocal Production and Visual Qualification" DVD (to be developed) as soon as possible after acceptance as new member to Organized Valley Chorus By the end of the 4-month period, show a basic understanding of these fundamentals	Attend contest or performances, but not as an on-stage performing member	Months 1-4
LEVEL 2	Learn 6 additional songs from existing rep, as determined by Directing & Music Teams	<u>Demonstrate the basics</u> of vocal production (posture, breathing, basic vowel placement +) and visual performance (face lifted, emotion of song, choreography +)	Possible on-stage participation at contest, if she qualifies by the deadlines established for the chorus as a whole Partial on-stage participation in performances (based on rep that has been passed)	Months 5-8
LEVEL 3	Learn remaining rep	<u>Demonstrate intermediate</u> vocal production (lift phrases, tall vowels, forward sound +) and visual performance (face "on", choreography learned +) ** i.e.; Vocal production and visual performance required of all chorus members: <i>Can she pass Rounds 2 and 3 of the Qualification Rounds Process?</i>	Full participation in contest and shows, based on qualification by the deadlines established for the chorus as a whole	Months 9-12

* Time frames are suggested. If a new member demonstrates a readiness and is comfortable moving on to the next level prior to the end of the four-month period, she is encouraged to do so upon discussion with her MDC mentor.

+ Vocal production/visual specifics included in this level, but not limited to the suggested elements; MDC mentor will assist Rookie with vocal production and visual expectations at each level during the process

Member Analysis Worksheet

Objectives	Novice	Apprentice	Proficient	Distinguished
Singing	1 point	2 points	3 points	4 points
Voice Part Accuracy	Doesn't sing or sings only during a few songs	Sings all of the songs but <u>some</u> inconsistencies occur in notes & words	Sings all songs with correct notes & words. Heartfelt expression & enthusiasm is evident <u>MOST</u> of the time.	Knows all notes and words to all songs and sings with heartfelt expression & enthusiasm <u>ALL</u> of the time.
Vocal Production	Excessive vibrato, scooping and/or frequent tuning issues occur as a result of poor breath support	<u>Some</u> vibrato, scooping and/or tuning issues occur. Understanding of breath support not yet apparent.	Open, free vowel sounds, resonance, good breath support and vocal energy presented <u>most</u> of the time	Open, free vowel sounds, resonance, good breath support and vocal energy presented <u>ALL</u> of the time.
Movement	1 point	2 points	3 points	4 points
Body	Singing posture is poor and/or singer doesn't move	Better singing posture when reminded. Moves <u>some</u> times, but unsure of movement pattern.	Good singing posture <u>most</u> of the time. Singer knows movement patterns and performs with energy <u>most</u> of the time.	Outstanding singing posture maintained throughout. All moves presented with on-going physical energy, characterization and enthusiasm <u>ALL</u> of the time.
Face	No facial expression	<u>Some</u> facial expression (with prompting) and/or over-characterization is present resulting in insincere salesmanship.	Good facial expression without prompting <u>most</u> of the time.	Completely believable, heartfelt facial expression and appropriate characterization presented <u>ALL</u> of the time.
Extra Practice	0 points	2 points	3 points	4 points
Personal rehearsal outside of chorus sessions	Doesn't	1 to 2 times per week	3 to 4 times per week	Daily. This singer "knows her stuff"
Chorus Rehearsal	1 point	2 points	3 points	4 points
Rehearses at "Performance Level"	Goes "through the motions" with little or no energy	Glimpses of desired performance level <u>some</u> of the time. Energy is present but sporadic.	Desired performance level evident <u>most</u> of the time.	Desired level of performance is very high and presented <u>all</u> of the time.

You may score yourself using half-points @ 2.5, etc...

Total Points _____

2009 Contest Qualification Program

Round One

RECORDING

Recording opportunities for "Ballad" and "Uptune" will be available every Wed.

Oct. 26 – Nov. 16

First Recording
Must be submitted
On or before
Nov. 16, '07

NOTE: Passing this recording is not required, but submitting it IS. If you do not submit a tape by Nov. 16th, it will be assumed that you do not intend to compete with the chorus in May.

Passing Deadline:
Jan. 11, '08

Singers who successfully complete this round are on the road to contest and move to
Round 2

Round Two

SMALL ENSEMBLES

PASSING REQUIREMENTS:

In addition to notes, words and breaths...

Vocal Production
Techniques, Visual
Characterization &
Attitude

***These sessions
will be videotaped***

Singers will sign up for pre-rehearsal sessions:

Jan. 11th
Thru
Feb. 15th
(6:15 to 6:50)

ENSEMBLES

COMPRISED OF:

2 Tenors
4 Leads
3 Basses
2 Baritones

**Sign-Up Sheets
Will be made
available beginning
Oct. 26th.**

**ALL COMPETING
SINGERS WILL
SUCCESSFULLY
COMPLETE THIS
ROUND AND MOVE
TO ROUND 3...**

Round Three

VISUAL

Precision in
Choreography, Assigned
Characterization &
Imagery

**Final evaluation of
this round will be
done by the Visual
Team during all
rehearsals. MARCH
rehearsals, prior to
retreat are final
opportunities to pass
this round.**

DEADLINE:

Wed.

March 22

This is the Wednesday rehearsal before the Retreat with (coach name)

CRITERIA:

All competing singers should demonstrate believable characterization, precision when presenting choreography, facial involvement and sell, etc...

ORGANIZED VALLEY CHORUS
Rehearsal Schedule – October 25th – Nov. 15th, 2008

Wed., Oct. 25th

- 7:00 -- Stretch Out the Ol' Bod – *Linda*.
7:10 -- STAMINA SUPREME – *Corey O.*
7:20 -- New Vocal Prep Stuff – *Sue*
7:40 -- “DIET RIOT” -- w/quartets – *Sue*
We'll be asking all sorts of different Singers to be in the quartets for this One...so be ready! It could be YOU!
7:55 -- BRAND NEW SONG!! “HOME”
A quick couple of run-thrus..then...
8:05 -- **SECTIONALS: “HOME”**
Leads: *Kerri* Bases: *Sharon*
Bari: *Linda* Tenors: *Judy*
8:35 -- FULL CHORUS: “Home”
(Stand in Sections on Risers)
8:50 -- **QUARTET PROMOTION:**
“Draw names!”
9:00 -- **TRI-CHORUS REHEARSALS:**
Contest Uptune w/characterization
Directors: *Sue & Assistants*
9:20 -- **COACHING OF A TRI-CHORUS**
Sue will coach ONE of the tri-choruses
While the rest of us observe...
Which group? We'll draw a number!
9:40 -- Full Chorus: **Good Ol' Acapella**
9:45 -- Chorus Business Meeting....

Wed., Nov. 1st

- 7:00 -- Expand those Muscles – *Linda*
7:10 -- Stamina Routine! – *Corey O.*
7:20 -- Thumbprint Our Sound! – *Sue*
7:35 -- **IT'S A GOOD DAY** – *Sue/Corey*
Choreography polish tonight!
7:50 -- “MY BUDDY” – *Sue*
Let's set up a few technical cool things and
Then go off into ...
8:05 -- **DUET SECTIONALS –**
“My Buddy” & “Home”
Bari/Lead – Edna
Tenor/Bass – Jean
8:40 -- Chorus: **BUDDY & HOME** – *Sue*
9:00 -- **QUARTET PROMO** – *Linda L.*
9:10 -- KEEPIN' THINGS FRESH...
“When I Fall in Love” – *Edna*
“Carol's Theme” – *Edna*
“We Are Two” – *Jean*
“Heartache Tonight” – *Jean*
9:30 -- **CONTEST UPTUNE** – *Sue*
½ of chorus performs for other
9:45 -- Chorus Business Meeting...

Nov. 8th, 2006

- 7:00 – STRETCH IT OUT! – *Linda*
7:10 – Stamina Incredible! – *Corey O.*
7:20 – The BGSC Resonance – *Edna*
7:35 – **THANK YOU FOR MUSIC** – *Sue*
7:45 – **MY BUDDY** – *Sue*
7:55 – “HOME” – **Week #3** – *Sue*
8:15 – **GIMME! GIMME! With choreo**
8:25 – **SMALL ENSEMBLE BREAKOUTS**
Section Leaders will be appointed to
Facilitate each group....
“Contest Uptune”
8:45 – **SMALL ENSEMBLES PERFORM!**
Sue will do a small bit of coaching with each
Group...all observe and learn
9:10 – Full chorus: **Contest Uptune**
9:20 – **NOVEMBER 11TH SINGERS**
PERFORM...ALL OTHERS
OBSERVE...AND TAKE NOTES
Director: *Jean*
Coach: *Sue*
REP SONGS TO BE SUNG:
1. **Heartache Tonight**
2. **California Dreamin'**
3. **Red Robin**
4. **My Buddy**
5. **Diet Riot**
6. **Gimme! Gimme!**
7. **Good Ol' Acapella**
8. **Thank You for the Music**
9. **Carol's Theme**

SAT., NOV. 11TH
BENEFIT PERFORMANCE FOR
OUR REHEARSAL HALL
WE NEED ALL SINGERS!!!

Wed., Nov. 15th

This rehearsal will focus on preparation for
our coaching session with Betty Star.
Also...“Home” will be sung OFF PAPER!

Sat., Nov. 18th
FULL CHORUS
COACHING SESSION
With Betty Star!

This session is CRITICAL to our preparations
for next Spring's contest! We need EVERY
committed singer in the chorus to be there...
on time...and ready to GROW!!!